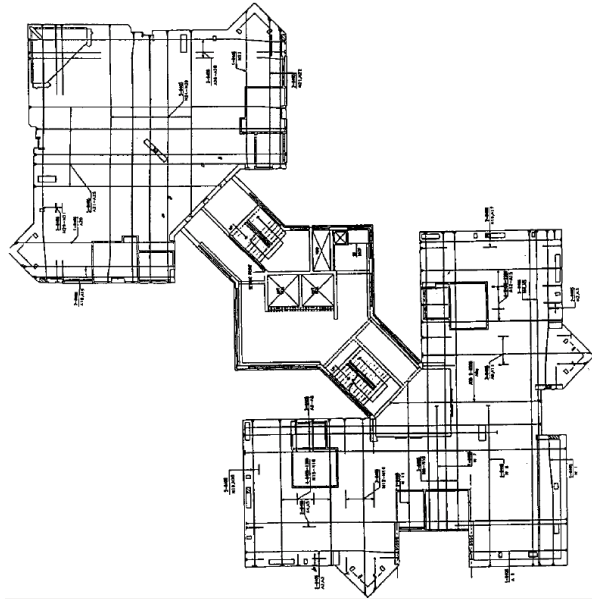


Post-tensioned concrete flat slab for 4 HDB residential buildings: 16 to 18 storeys

Work undertaken

- ✚ General layout
- ✚ Detail profiles
- ✚ Stressing block details
- ✚ Extension calculation
- ✚ Punching shear links: detail arrangement
- ✚ Standard details



Plan layout: typical floor of the tower block: post-tensioning layout

- ✚ Many other post-tensioned slabs were detailed, e.g. Suntec city, Nee An City shopping Centre, Woodland Bus Depot, etc.
- ✚ Many post-tensioned beams were also done, e.g. the transfer beam of the Suntec city (9000mm deep x 2500mm wide), transfer for beam for the URA building, etc.